

Fast and Sanitary Drying



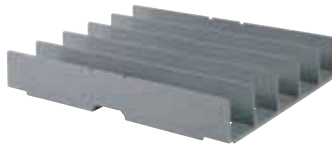
- 100% rust-free and break-resistant.
- Provides convenient, sanitary drying and storage, maximizes space utilization.
- Mobile units allow for easy floor clean-up and transportation.
- Securely holds up to 100 domes.

CAMBRO
Healthcare

Camshelving® Premium Series Dome Drying Rack

Designed for Healthcare Foodservice, the Camshelving Premium Series Dome Drying Rack is an efficient drying and storage solution. Securely store up to 100 domes upright to promote faster and more sanitary drying while keeping warewashing areas organized.

- 100% rust-free, break-resistant and easy to assemble.
- Provides convenient, sanitary drying and storage, while maximizing space.
- Dome Drying Cradles are made of high impact ABS material.
- Lifetime warranty against rust and corrosion on posts and traverses.



Dome Drying Cradles are available separately to convert existing units to Dome Drying Racks.*



Camshelving® Premium Series Dome Drying Rack

CODE	DESCRIPTION	PRODUCT DIMENSIONS W x L x H	CASTERS	CASE LBS. (CUBE) CASE KG. (CUBE M ³)	CASE PACK
CPMU213675DDPKG**	Camshelving Premium Series Dome Drying Rack	21" x 36" x 75" (53 x 91 x 191 cm)	4 Premium Casters (Non-marking, swivel with total locking Brake)	103.7 (18.71) 47,04 (0,53)	1
CSDDC	10-Slot Dome Drying Cradle	16½" x 20½" x 3⅜" (41,40 x 52 x 8,59 cm)	—	3.15 (0.839) 1,43 (0,024)	1
CSDDC5	10-Slot Dome Drying Cradle 5 Pack	16½" x 20½" x 3⅜" (41,40 x 52 x 8,59 cm)	—	12.95 (3.069) 5,89 (0,087)	5

Camshelving Premium Series Colors: Speckled Gray (480), **Dome Drying Cradle Colors:** Soft Gray (151). Dome Drying Cradle covered by U.S. Patent D736,488 S.

* Individual Dome Drying Cradles fit on Camshelving Premium Series and Camshelving Elements Series 21" (53 cm) deep shelves only.

** Dome Drying Rack Includes: 1 box of 2 each pre-assembled post sets, 10 traverses and 4 premium casters. 2 boxes of 5 each Dome Drying Cradles.

For more information about Cambro products visit www.cambro.com or contact your Distributor, Cambro Sales Representative or the Cambro Customer Service Department.

